
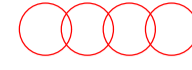

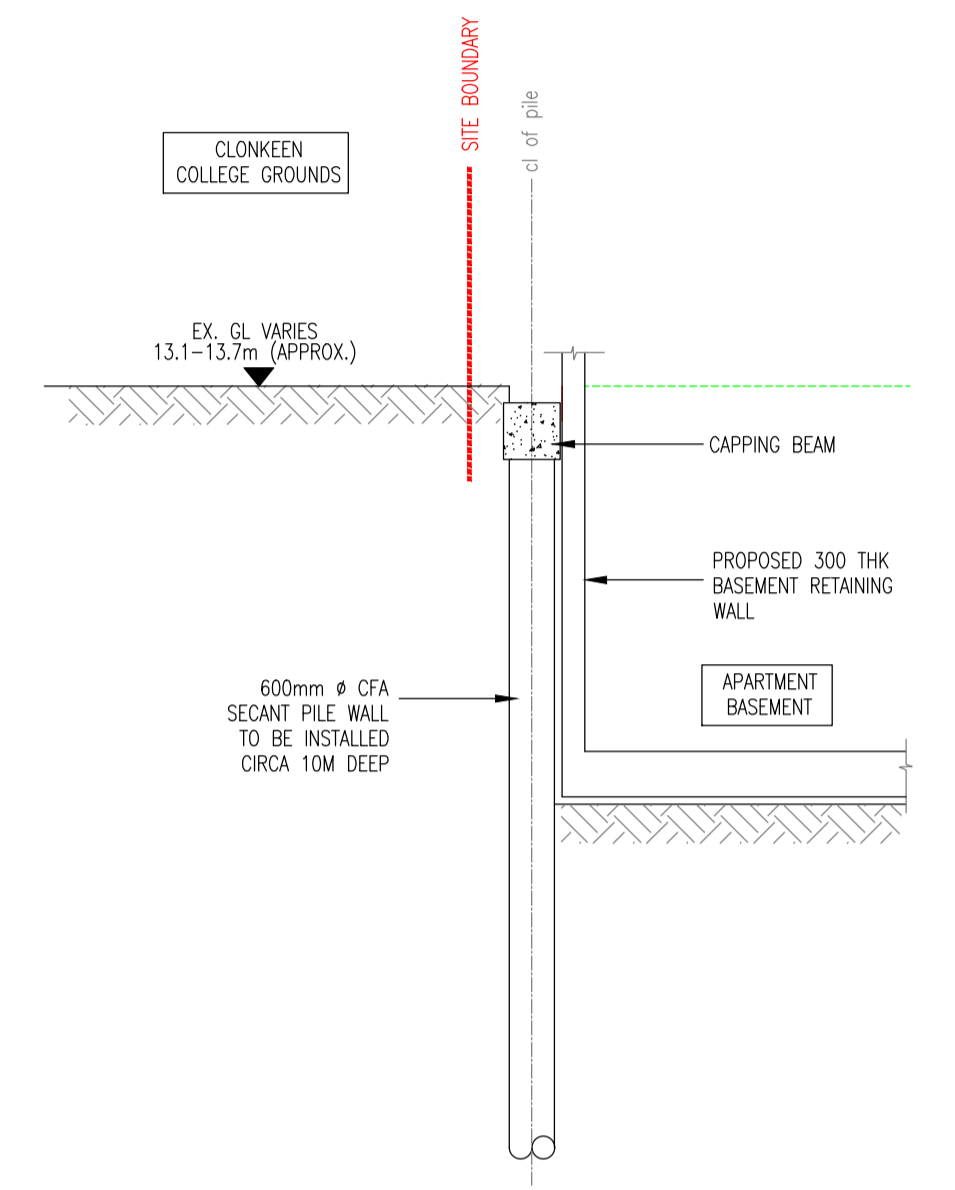
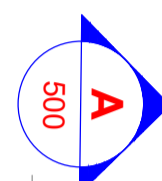


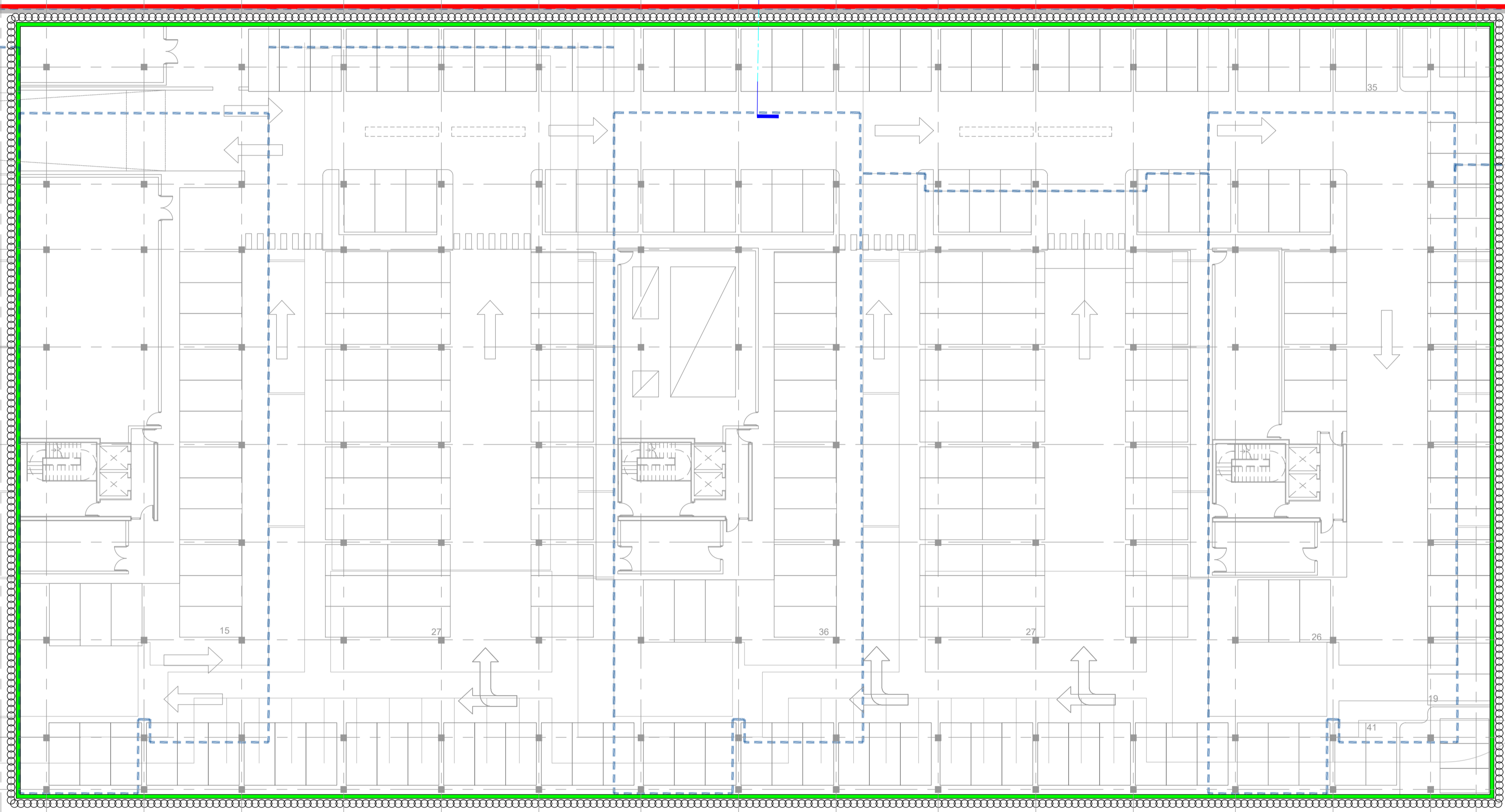
LEGEND:	
	SITE BOUNDARY
	600mm Ø CFA SECANT PILE WALL
	300mm THK RC BASEMENT WALL



ADJACENT CLONKEEN COLLEGE GROUNDS



SECTION A-A
SCALE 1:100



PLANNING DRAWING.
NOT FOR CONSTRUCTION.
ALL LEVELS GIVEN ARE
RELATIVE TO ORDNANCE DATUM.
THIS DRAWING HAS BEEN ISSUED FOR INFORMATION
PURPOSES ONLY AND MUST NOT BE USED
FOR CONSTRUCTION UNDER ANY CIRCUMSTANCES

PAC/SHD/162/20

W012

NOTES

- For setting out refer to Architect's drawings.
- This drawing to be read in conjunction with all other Architectural and Engineering drawings and all other relevant drawings and Specifications.
- DO NOT SCALE THIS DRAWING. Use figured dimensions only.
- No part of this document may be reproduced or transmitted in any form or stored in any retrieval system of any nature without the written permission as copyright holder except as agreed for use on the project for which the document was originally issued.
- Ordnance Survey Ireland Licence Number EN 0074020

Rev. No.	Date	REVISION NOTE	Dm. By	Chkd. By

Architect	Scott Tallon Walker			
Project	Proposed Development at Clonkeen Road			
Title	Proposed Basement Pile Wall Layout			
Dwg. No.	W012-CSC-ZZ-XX-DR-S-0500			
Date	Dm. by	Chkd. by	Apvd. by	Scale
Dec 2020	GS	JS	OS	1:250 @A1

CS Consulting Group
DUBLIN | LONDON | LIMERICK

Head Office
19-22 Dame Street, Dublin 2.
T: +353 (0)1 5480863 F: +353 (0)1 9011355
e: info@csconsulting.ie
w: www.csconsulting.ie

Quality I.S. EN ISO 9001:2008
Environment I.S. EN ISO 14001:2004
Energy I.S. EN ISO 50001:2011
Health & Safety OHSAS 18001:2007